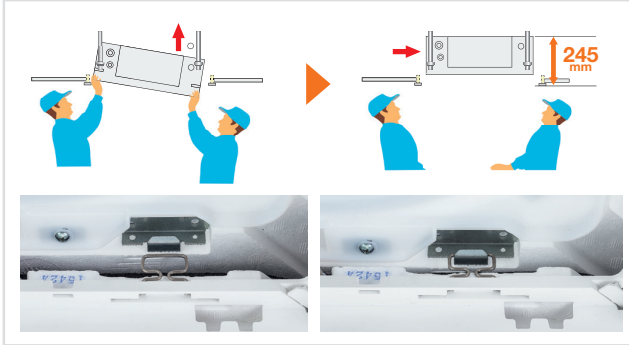


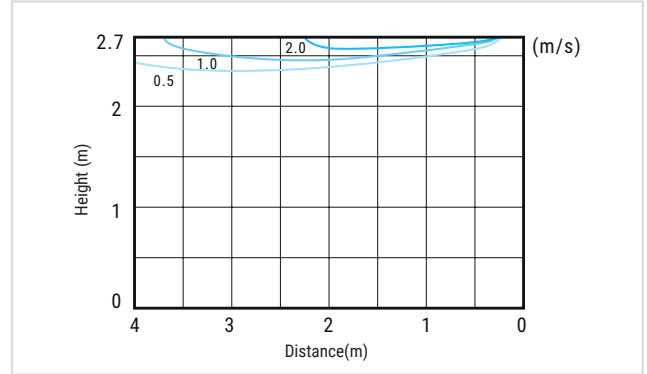
Simplified installation

The height above ceiling of 245 mm is top class in the industry. The height above ceiling of 245 mm enables fitting into narrow ceiling space. Installation is simple, even when the ceiling spaces are narrow to make the ceilings higher. Light weight (max 15kg) and temporary hanging hooks for grille allow to make installation easier and quicker.



Panel and control

The unit is supplied with SLP-2FAL panel which includes signal receiver. Is available as optional the SLP-2FALM panel combined with the new PAR-SL100A-E wireless remote control with weekly timer, backlight, temperature setting in 0.5 °C steps and individual control of the 4 deflectors.



Key Technologies

Technical specifications

MODEL			PLFY-P15VFM-E1	PLFY-P20VFM-E1	PLFY-P25VFM-E1	PLFY-P32VFM-E1	PLFY-P40VFM-E1	PLFY-P50VFM-E1
Default panel			SLP-2FAL					
Power			Single phase, 220-240V 50Hz					
Capacity in cooling mode*1		kW	1.7	2.2	2.8	3.6	4.5	5.6
		Btu/h	5800	7500	9600	12300	15400	19100
Capacity in heating mode*1		kW	1.9	2.5	3.2	4	5	6.3
		Btu/h	6500	8500	10900	13600	17100	21500
Power consumption	Cooling	kW	0.02	0.02	0.02	0.02	0.03	0.04
	Heating	kW	0.02	0.02	0.02	0.02	0.03	0.04
Current	Cooling	A	0.19	0.21	0.22	0.23	0.28	0.4
	Heating	A	0.14	0.16	0.17	0.18	0.23	0.35
External finish	Unit		Galvanised steel sheet with uncoated thermal insulation					
	Grille		Pure White					
Dimensions A x L x P	Unit	mm	245x570x570	245x570x570	245x570x570	245x570x570	245x570x570	245x570x570
	Grille	mm	10x625x625	10x625x625	10x625x625	10x625x625	10x625x625	10x625x625
Net weight	Unit	kg	14	14	14	15	15	15
	Grille	kg	3	3	3	3	3	3
Heat exchanger			Cross fins					
Fan	Type x Quantity		3D Turbo fan x 1					
	Air flow*2	m ³ /min	6.5 - 7.5 - 8	6.5 - 7.5 - 8.5	6.5 - 8 - 9	7 - 8 - 9.5	7.5 - 9 - 11	9 - 11 - 13
	Ext. Static pressure	Pa	0	0	0	0	0	0
Air filter			Polypropylen honeycomb (long life)					
Refrigerant pipe diameter	Gas (swaged)	mm	12.7	12.7	12.7	12.7	12.7	12.7
	Liquid (swaged)	mm	6.35	6.35	6.35	6.35	6.35	6.35
Sound pressure*2*3		dB(A)	26 - 28 - 30	26 - 29 - 31	26 - 30 - 33	26 - 30 - 34	28 - 33 - 39	33 - 39 - 43

* Default panel, SLP-2FAL panel is equipped by Signal receiver

*1 For heating/cooling capacity, the maximum value with the unit operating in the following conditions is given.

Cooling: indoor 27°C (81°F) DB/19°C (66°F) WB, outdoor 35°C (95°F) DB. Heating: indoor 20°C (68°F) DB, outdoor 7°C (45°F) DB/6°C (43°F) WB.

*2 Air flow/noise levels given for operation in low-medium-high modes.

*3 Measured in anechoic chamber with 230V mains power.

Optional parts	DESCRIPTION
PAC-SF1ME-E	Corner 3D I-see Sensor for PLFY-P VFM-E1