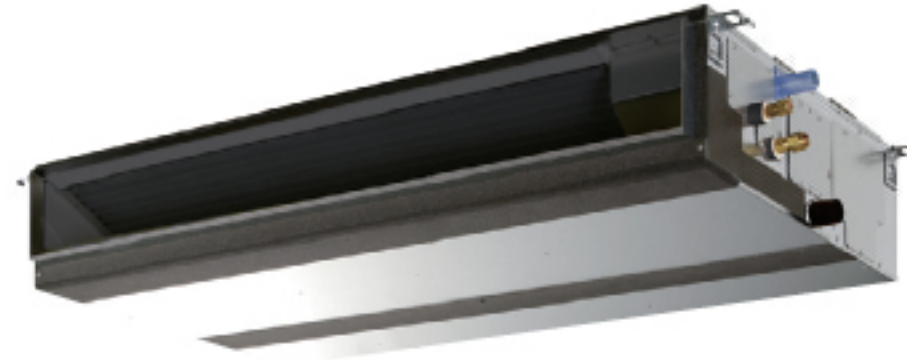


PEFY-WP-VMA-E

CEILING CONCEALED MEDIUM TO HIGH STATIC PRESSURE



Technical specifications

| MODEL | | | PEFY-WP20VMA-E | PEFY-WP25VMA-E | PEFY-WP32VMA-E | PEFY-WP40VMA-E | PEFY-WP50VMA-E | PEFY-WP63VMA-E | PEFY-WP71VMA-E | PEFY-WP80VMA-E | PEFY-WP100VMA-E | PEFY-WP125VMA-E |
|-------------------------------|------------------------------|---------------------|--------------------------------|------------------|------------------|------------------|------------------|------------------|------------------|------------------|------------------|------------------|
| Power Supply | | | 1 phase 220-240V, 50Hz | | | | | | | | | |
| Cooling capacity | | kW | 2.2 | 2.8 | 3.6 | 4.5 | 5.6 | 7.1 | 8.0 | 9.0 | 11.2 | 14.0 |
| | | Btu/h | 7500 | 9600 | 12300 | 15400 | 19100 | 24200 | 27300 | 30700 | 38200 | 47800 |
| Heating capacity | | kW | 2.4 | 3.1 | 4.1 | 5.1 | 6.3 | 8.0 | 9.0 | 10.0 | 12.5 | 16.0 |
| | | Btu/h | 8500 | 10900 | 13600 | 17100 | 21500 | 27300 | 30700 | 34100 | 42700 | 54600 |
| Power input | Cooling | kW | 0.07 | 0.09 | 0.11 | 0.14 | 0.14 | 0.14 | 0.24 | 0.24 | 0.24 | 0.36 |
| | Heating | kW | 0.05 | 0.07 | 0.09 | 0.12 | 0.12 | 0.12 | 0.22 | 0.22 | 0.22 | 0.34 |
| Current | Cooling | A | 0.55 | 0.64 | 0.74 | 1.15 | 1.15 | 1.15 | 1.47 | 1.47 | 1.47 | 2.21 |
| | Heating | A | 0.44 | 0.53 | 0.63 | 1.04 | 1.04 | 1.04 | 1.36 | 1.36 | 1.36 | 2.10 |
| External finish | | | Galvanized steel plate | | | | | | | | | |
| Dimensions | HxLxD | mm | 250x700x732 | 250x900x732 | 250x900x732 | 250x1100x732 | 250x1100x732 | 250x1100x732 | 250x1400x732 | 250x1400x732 | 250x1400x732 | 250x1600x732 |
| Net weight | | kg | 21 | 26 | 26 | 31 | 31 | 31 | 40 | 40 | 40 | 42 |
| Heat exchanger | | | Cross fin (Al fin and Cu pipe) | | | | | | | | | |
| Fan | Type x n. | | Sirocco Fan x 1 | Sirocco Fan x 1 | Sirocco Fan x 1 | Sirocco Fan x 2 | Sirocco Fan x 2 | Sirocco Fan x 2 | Sirocco Fan x 2 | Sirocco Fan x 2 | Sirocco Fan x 2 | Sirocco Fan x 2 |
| | Air flow (low-mid-high) | m ³ /min | 7.5-9-10-5 | 10-12-14 | 12-14.5-17 | 14.5-18-21 | 14.5-18-21 | 14.5-18-21 | 23-28-33 | 23-28-33 | 23-28-33 | 29.5-35.5-42 |
| | Ex Static pressure | Pa | 35-50-70-100-150 | 35-50-70-100-150 | 35-50-70-100-150 | 35-50-70-100-150 | 35-50-70-100-150 | 35-50-70-100-150 | 35-50-70-100-150 | 35-50-70-100-150 | 35-50-70-100-150 | 35-50-70-100-150 |
| Motor | Type | | Motor DC | | | | | | | | | |
| | Power output | kW | 0.085 | 0.085 | 0.085 | 0.121 | 0.121 | 0.121 | 0.244 | 0.244 | 0.244 | 0.244 |
| Air filter | | | PP honeycomb fabric | | | | | | | | | |
| Water pipe diameter | Inlet/Outlet | | Rc 3/4 screw | Rc 3/4 screw | Rc 3/4 screw | Rc 3/4 screw | Rc 3/4 screw | Rc 1-1/4 screw | Rc 1-1/4 screw | Rc 1-1/4 screw | Rc 1-1/4 screw | Rc 1-1/4 screw |
| Local drain pipe diameter | | | OD 32 | OD 32 | OD 32 | OD 32 | OD 32 | OD 32 | OD 32 | OD 32 | OD 32 | OD 32 |
| Sound pressure (low-mid-high) | Measured in anechoic chamber | dB(A) | 23-26-29 | 23-27-30 | 25-29-32 | 26-29-34 | 26-29-34 | 26-29-34 | 28-33-37 | 28-33-37 | 28-33-37 | 32-36-40 |

*1 Heating/cooling capacity is the maximum functioning value in the following condition. Cooling: indoor 27°C DB/19°C WB (81°F DB/66°F WB), outdoor 35°C DB (95°F DB). Heating : indoor 20°C DB (68°F DB), outdoor 7°C DB (45°F DB/42°F WB). Pipe length: 7,5 m (24-9/16 feet). Height difference: 0 m (0 feet).

*2 Factory setting for outdoor static pressure is 15 Pa for PEFY-WP-VMS1-E and 50 Pa for PEFY-WP-VMA-E.

HVRF indoor units can only be connected to CMB-WP HBC (HVRF) and outdoor units PURY-(E)P-YLM-A or PQRY-P-YLM. Screw connection to indoor units 3/4".